

UK SEARCHERS ID PRODUCTS CAN OFFER YOU SOME EXTRA ADVANTAGES:

CLICK-LOCK SYSTEM

The biggest advantage of our panels is that they link together better than any similar product on the market, due to our unique click-lock system.

Glue or silicone is not required to make them watertight. Our panels are water repellent, even at the seams.

We also supply the new Duma-Clip® system, with its unique joint system which allows panels to be joined together on all sides.

TRIMS

As a supplement to our panels we offer a wide range of finishing profiles: Universal Corner, Start and Edge Trim, Multifunctional Trim and H-profile.

The main advantage of our profiles is that they can be easily assembled and disassembled with our click-lock system. This saves time and eases installation.

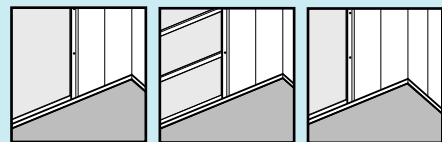
TOUGH AND STRONG

The internal 'webbing' of UK Searchers ID panels between the front and back plastic sheet has many ribs, which give the panels higher impact resistance and good thermo-insulating characteristics.

SATIN FINISH

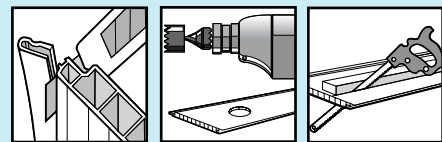
UK Searchers ID panels have a satin finish to enhance their appearance and make fingerprints less visible.

INSTALLATION INSTRUCTIONS



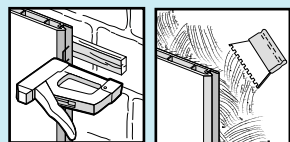
STEP 1: SETTING UP

Build a wooden frame with cross-laths, or on level walls/ceilings use a good contact adhesive. Wooden frames are most common.



STEP 2: PREPARING

If needed, cut or saw the panels with the decorative (printed) side upwards.



STEP 3: ATTACHING

After installing the PVC profiles (trims, corners, etc), nail, staple, screw or glue the first panel to the frame (or wall). Insert the next panel into the groove of the previous panel and nail, staple, screw or glue the thin end of the opposite side. Continue this process for the remaining panels.



UK SEARCHERS
IMPORTERS & DISTRIBUTORS
OF PVC BUILDING PRODUCTS



Internal decorative PVC panels for walls and ceilings



UK SEARCHERS



Your UK Searchers ID Products Distributor:



Internal decorative PVC panels for walls and ceilings

PVC panels are an increasingly popular and efficient means to finish walls and ceilings.

UK Searchers ID panels are high quality, aesthetically pleasing, easy to install and maintenance free.

The high quality PVC hollow panels are coated with different textures and colours to meet individual styles and tastes.

Standard lengths are 2.6m, with 5m lengths available on the Ceiling Range.

The Duma-Clip® range is only available in 1.2m lengths.

Look at all the advantages of PVC panels:

- Save time and money
- Easy DIY installation
- Maintenance free
- Water resistant
- Insulating properties
- Tough and strong
- Suitable for wall and ceilings in houses and offices
- Conforms to Class M1 fire rating

ID WALL RANGE



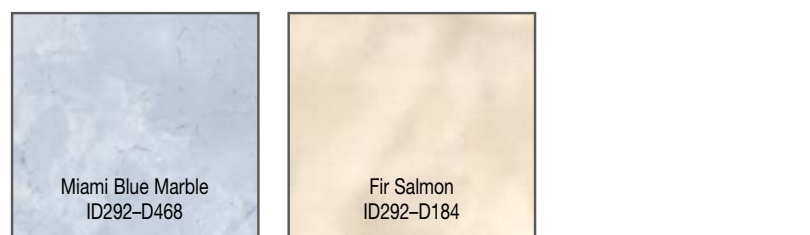
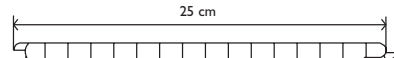
Click-Lock

ID 292

Available in 2.6m lengths.

Minimum order quantity 7.8m² (3 packs of 4 panels 2.6 metres long per outer case)

25 cm



ID CEILING RANGE

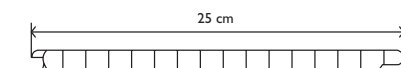
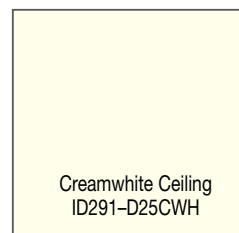
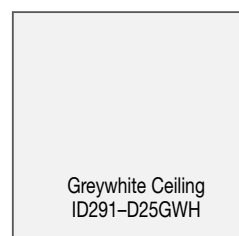
ID 291 – 25cm panel
Ex-stock

Available in 2.6m lengths (WH2).
Minimum order quantity 7.8m²
(3 packs of 4 panels 2.6 metres long per outer case)

5m lengths (WH5). Minimum order quantity 1 pack of 4 panels 5 metres long



Click-Lock

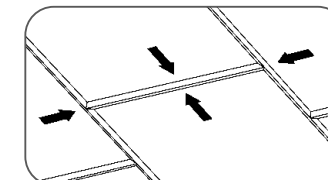
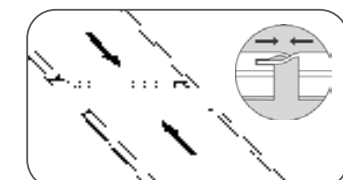


ID DUMA-CLIP RANGE

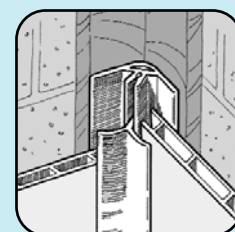
NEW



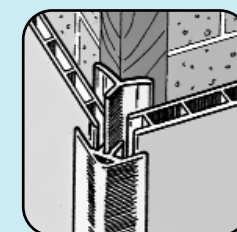
Unique joint system – enables panels to be joined at head to span any length of ceiling or wall. Available in 1.2m lengths x 25cm wide
Minimum order quantity 1 pack of 8 panels 1.2m long



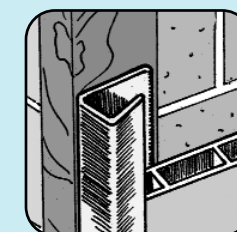
ID TRIMS



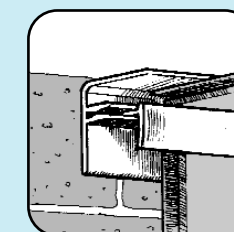
UNIVERSAL CORNER: Inner corner (UC) ID 295



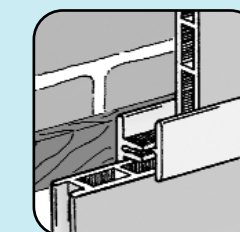
UNIVERSAL CORNER: Outer corner (UC) ID 295



START & EDGE TRIM (SET) ID 294



MULTIFUNCTIONAL TRIM (MF) ID 296



H-PROFILE (HP) ID 298

T-TRIM ID 304 Available in Silver and Gold

Minimum order quantity 1 pack of 5 trims 2.7 metres long